

DRAIN EASMENT CONFIRMED

REHABILITATE SWALE
BETWEEN THESE HOMES
TO ACHIEVE
UNRESTRICTED FLOW
FROM ISLAND WAY TO
PIPE RUN-01

REHABILITATE ALL
MARKED ROAD SIDE
SWALES

When the above improvements are being done the adjacent private driveway culverts must be cleaned. most all these culverts are badly silted up, there is always the possibility that these culverts are rusted through and will at some point need to be replaced.

18.A & 18.B



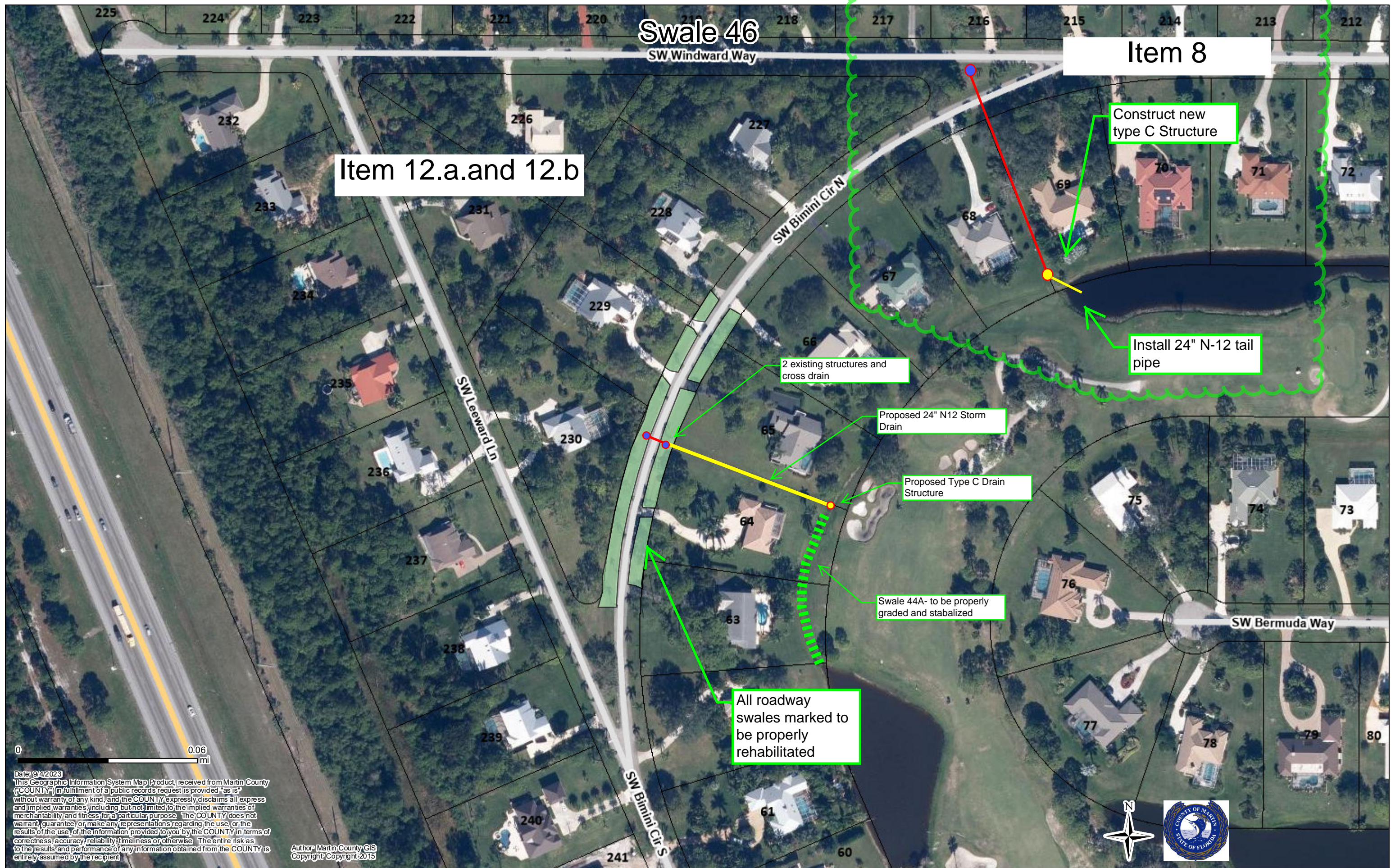
SW Wisper Bay Dr

PR43- PIPE UNDER THE ROADWAY

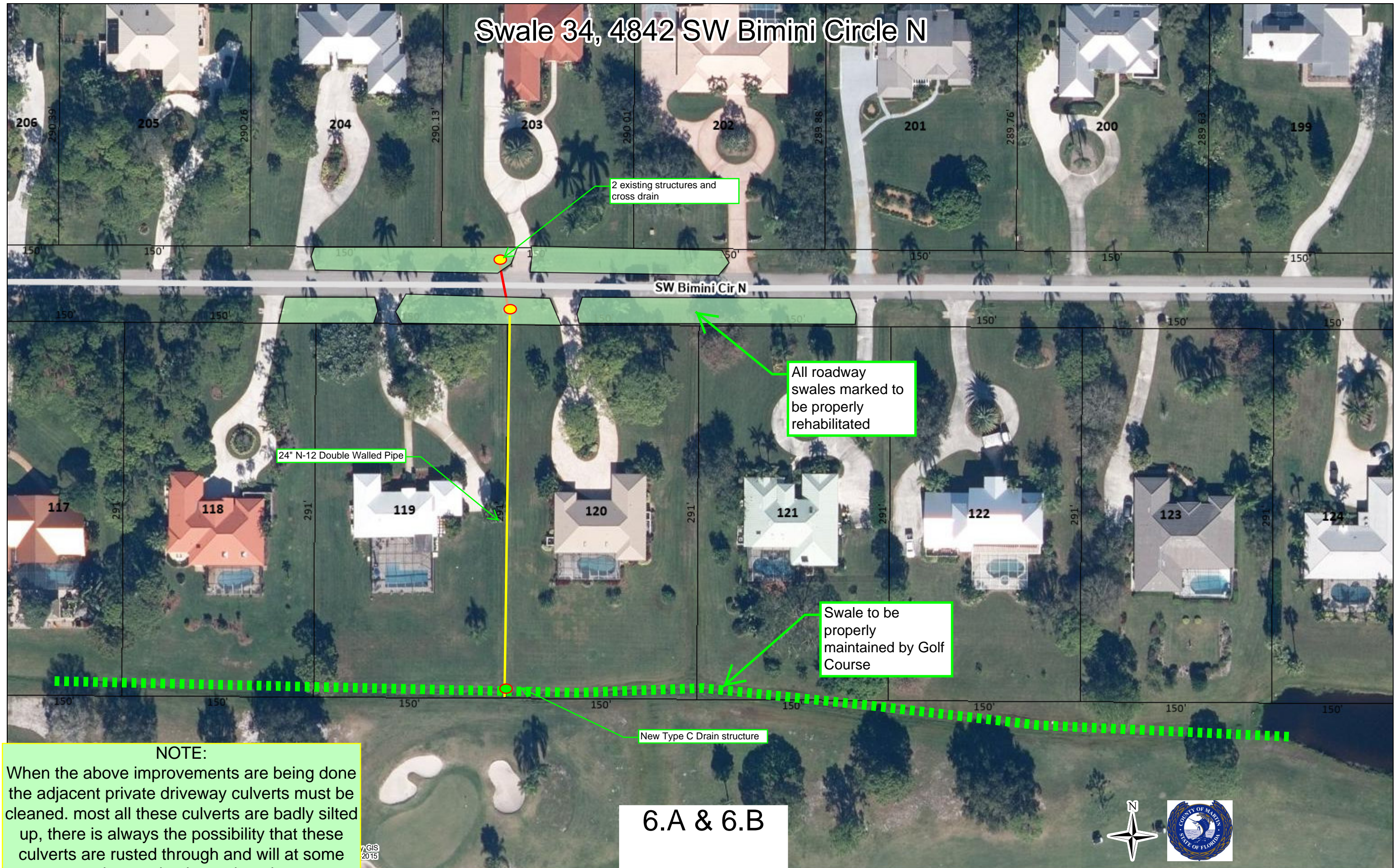


Date: 9/9/2023
This Geographic Information System Map Product received from Martin County ("COUNTY") in fulfillment of a public records request is provided "as is" without warranty of any kind and the COUNTY expressly disclaims all express and implied warranties, including but not limited to the implied warranties of merchantability and fitness for a particular purpose. The COUNTY does not warrant, guarantee or make any representations regarding the use, or the results of the use, of the information provided to you by the COUNTY in terms of correctness, accuracy, reliability, timeliness or otherwise. The entire risk as to the results and performance of any information obtained from the COUNTY is entirely assumed by the recipient.

Author: Martin County GIS
Copyright: Copyright: 2015



Swale 34, 4842 SW Bimini Circle N



NOTE:
When the above improvements are being done the adjacent private driveway culverts must be cleaned. most all these culverts are badly silted up, there is always the possibility that these culverts are rusted through and will at some point need to be replaced.

6.A & 6.B



Evergreen

4396 SW Bimini Cir S

Legend

Properly grade, modify Irrigation and sod with floratam sod.

Grade and sod shaded areas per detailed grading plan.

open end discharge into pond

Remove existing undersized pipe replace with 24" N-12 Double Wall storm pipe

Core drill and seal into existing box the proposed 24" pipe

Establish flow line from break point (high point) further up the road, to the discharge structures

Establish flow line from break point (high point) further up the road, to the discharge structures

Grade and R.O.W. sod shaded areas (R.O.W.) per detailed grading plan.

2- ea Existing drain structures designed to catch swale water and drain to the back pond. Due to lack of / or improper swale maintenance and blocked driveway culverts. Stormwater cannot reach these two structures.

NOTE:

When the above improvements are being done the adjacent private driveway culverts must be cleaned. most all these culverts are badly silted up, there is always the possibility that these culverts are rusted through and will at some point need to be replaced.

3.A AND 3.B

100 ft

