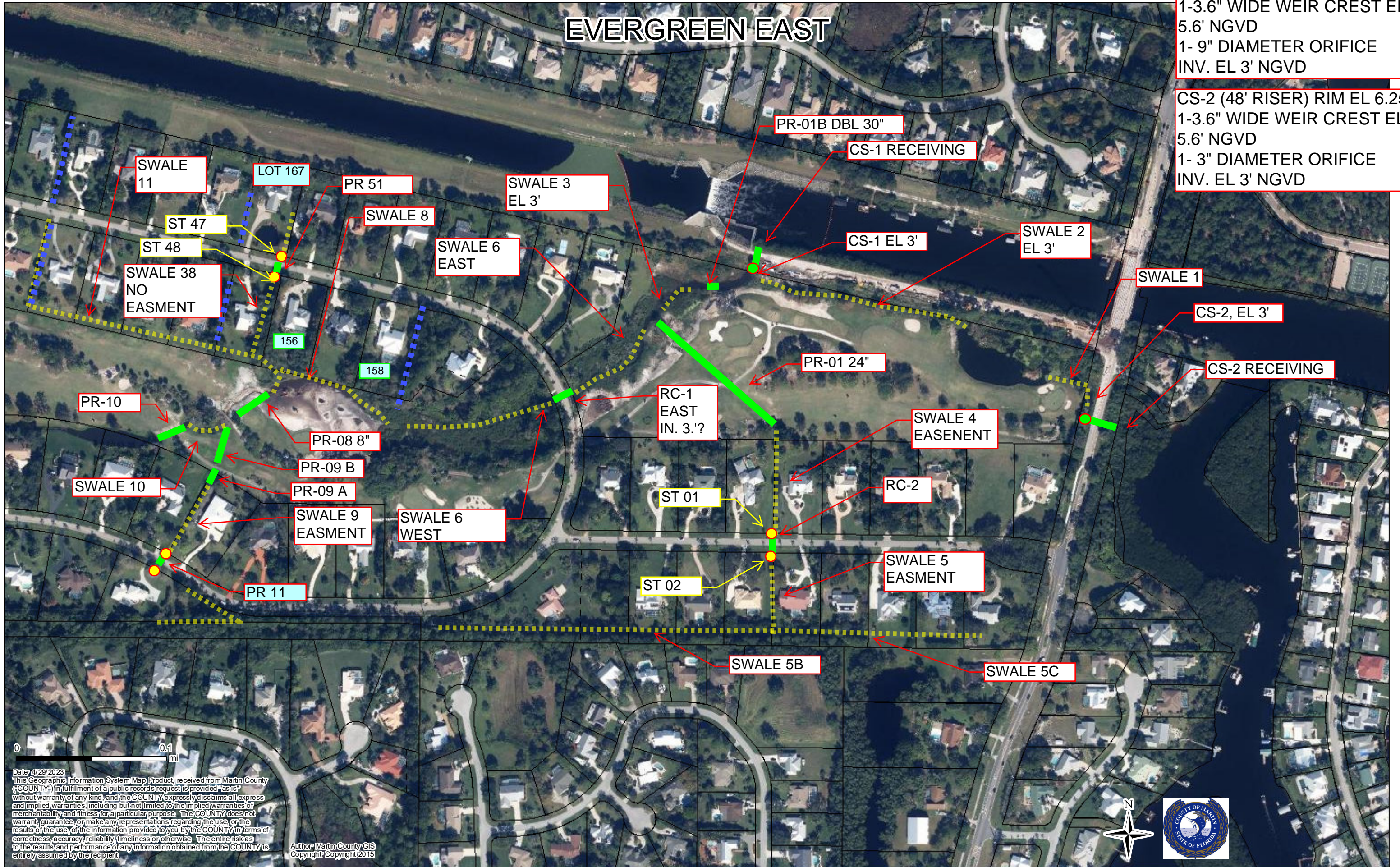


EVERGREEN EAST

CS-1 TOP OF STR. EL 8.14
 1-3.6" WIDE WEIR CREST EL 5.6' NGVD
 1- 9" DIAMETER ORIFICE
 INV. EL 3' NGVD

CS-2 (48' RISER) RIM EL 6.25
 1-3.6" WIDE WEIR CREST EL 5.6' NGVD
 1- 3" DIAMETER ORIFICE
 INV. EL 3' NGVD

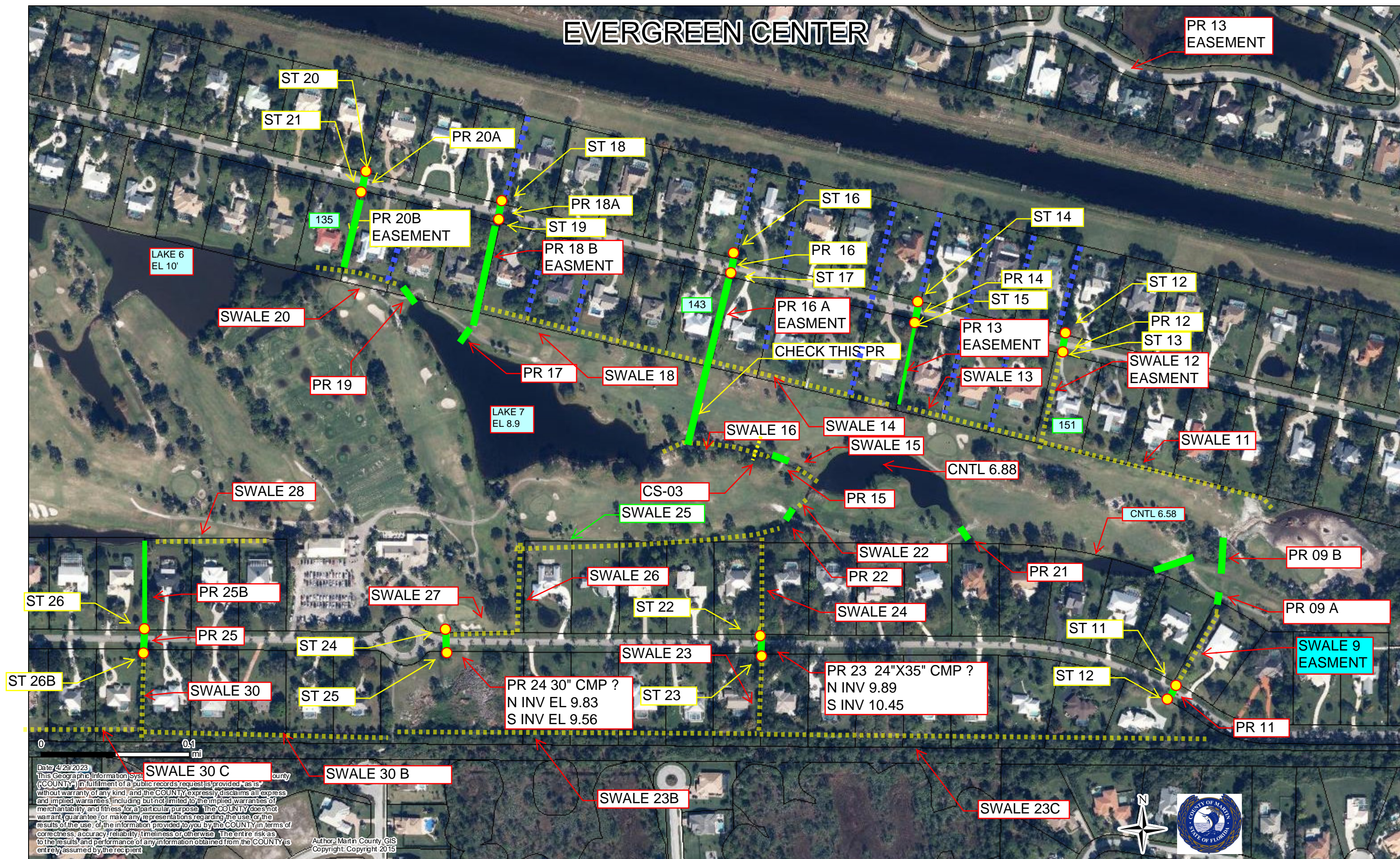


Date: 4/29/2023
 This Geographic Information System Map Product, received from Martin County ("COUNTY") in fulfillment of a public records request is provided "as is" without warranty of any kind, and the COUNTY expressly disclaims all express and implied warranties, including but not limited to the implied warranties of merchantability and fitness for a particular purpose. The COUNTY does not warrant, guarantee or make any representations regarding the use or the results of the use of the information provided to you by the COUNTY in terms of correctness, accuracy, reliability, timeliness or otherwise. The entire risk as to the results and performance of any information obtained from the COUNTY is entirely assumed by the recipient.

Author: Martin County GIS
 Copyright: Copyright: 2015



EVERGREEN CENTER



Date: 4/29/2023
 This Geographic Information System (GIS) information is provided "as is" without warranty of any kind, and the COUNTY expressly disclaims all express and implied warranties, including but not limited to the implied warranties of merchantability and fitness for a particular purpose. The COUNTY does not warrant, guarantee, or make any representations regarding the use or the results of the use, of the information provided to you by the COUNTY in terms of correctness, accuracy, reliability, timeliness or otherwise. The entire risk as to the results and performance of any information obtained from the COUNTY is entirely assumed by the recipient.

Author: Martin County GIS
 Copyright: Copyright 2015



PR 24 30" CMP ?
 N INV EL 9.83
 S INV EL 9.56

PR 23 24"X35" CMP ?
 N INV 9.89
 S INV 10.45

SWALE 30 C

SWALE 30 B

SWALE 23C

SWALE 23B

SWALE 9 EASMENT

PR 13 EASEMENT

PR 20B EASEMENT

CHECK THIS PR

LAKE 6
 EL 10'

LAKE 7
 EL 8.9

CNTL 6.88

CNTL 6.58

CS-03

SWALE 30 C

SWALE 30 B

SWALE 23C

SWALE 23B

SWALE 9 EASMENT

PR 13 EASEMENT

PR 20B EASEMENT

CHECK THIS PR

LAKE 6
 EL 10'

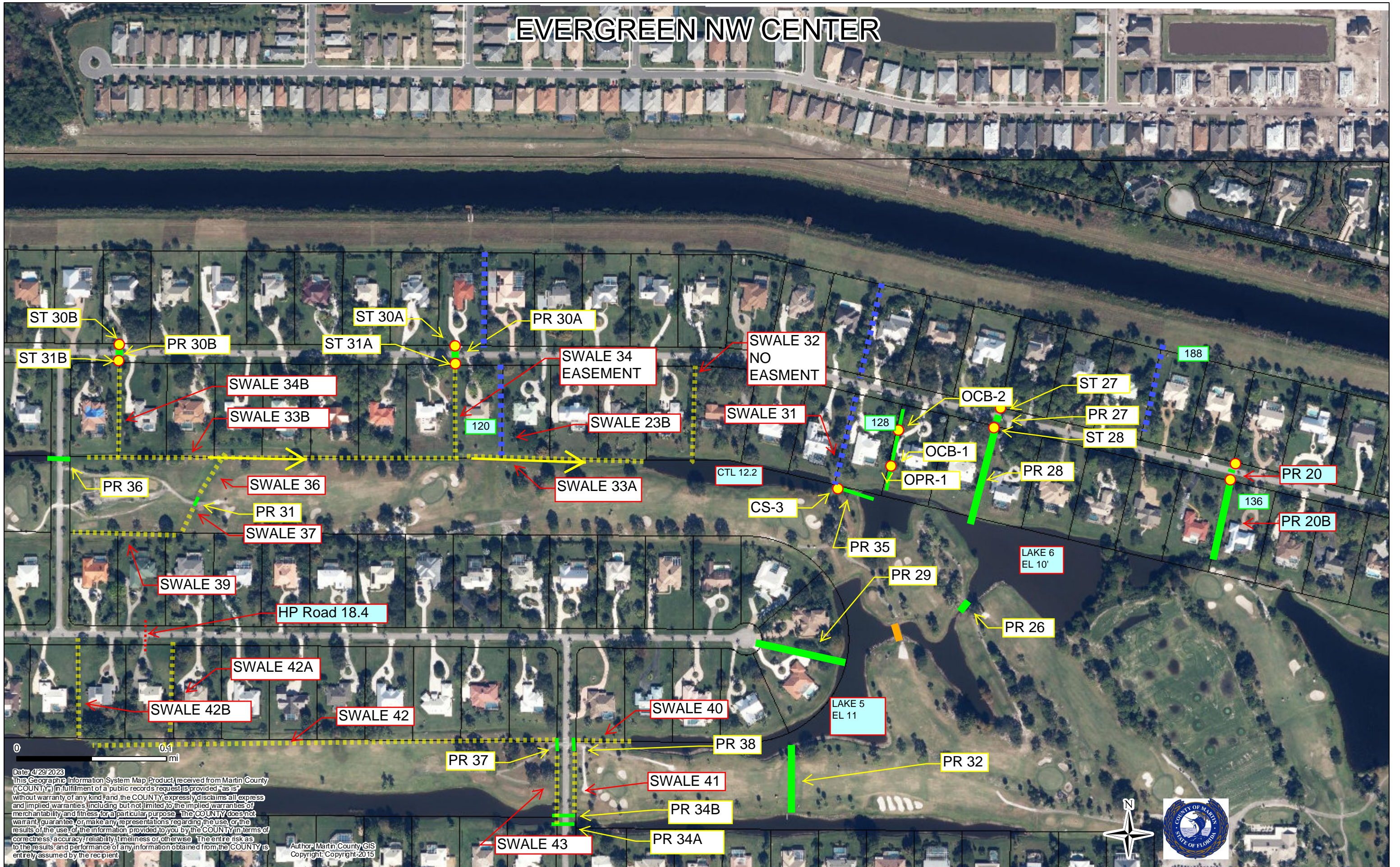
LAKE 7
 EL 8.9

CNTL 6.88

CNTL 6.58

CS-03

EVERGREEN NW CENTER

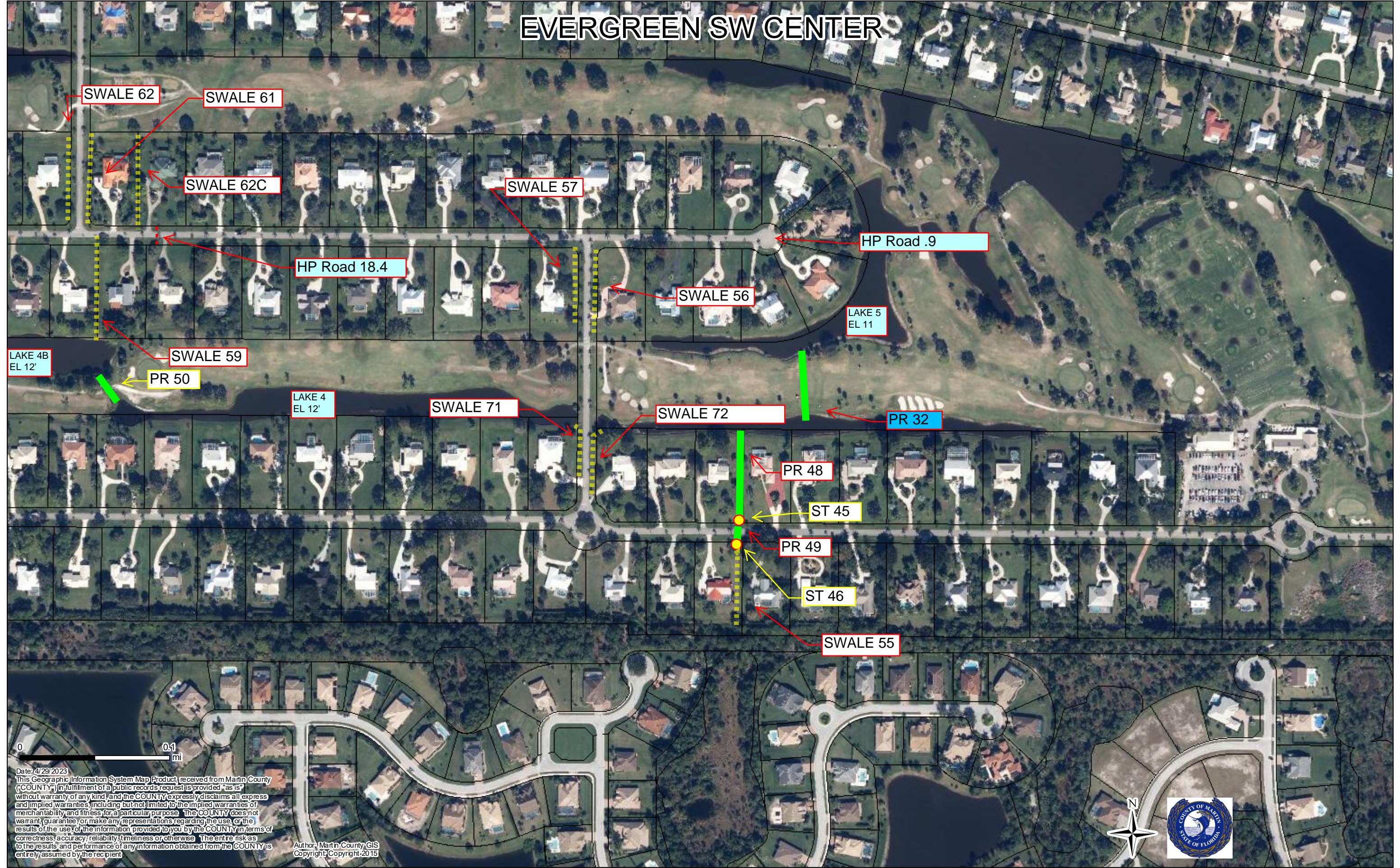


Date: 4/29/2023
 This Geographic Information System Map Product, received from Martin County ("COUNTY") in fulfillment of a public records request, is provided "as is" without warranty of any kind, and the COUNTY expressly disclaims all express and implied warranties, including but not limited to the implied warranties of merchantability and fitness for a particular purpose. The COUNTY does not warrant, guarantee or make any representations regarding the use or the results of the use of the information provided to you by the COUNTY in terms of correctness, accuracy, reliability, timeliness or otherwise. The entire risk as to the results and performance of any information obtained from the COUNTY is entirely assumed by the recipient.

Author: Martin County GIS
 Copyright: Copyright: 2015



EVERGREEN SW CENTER

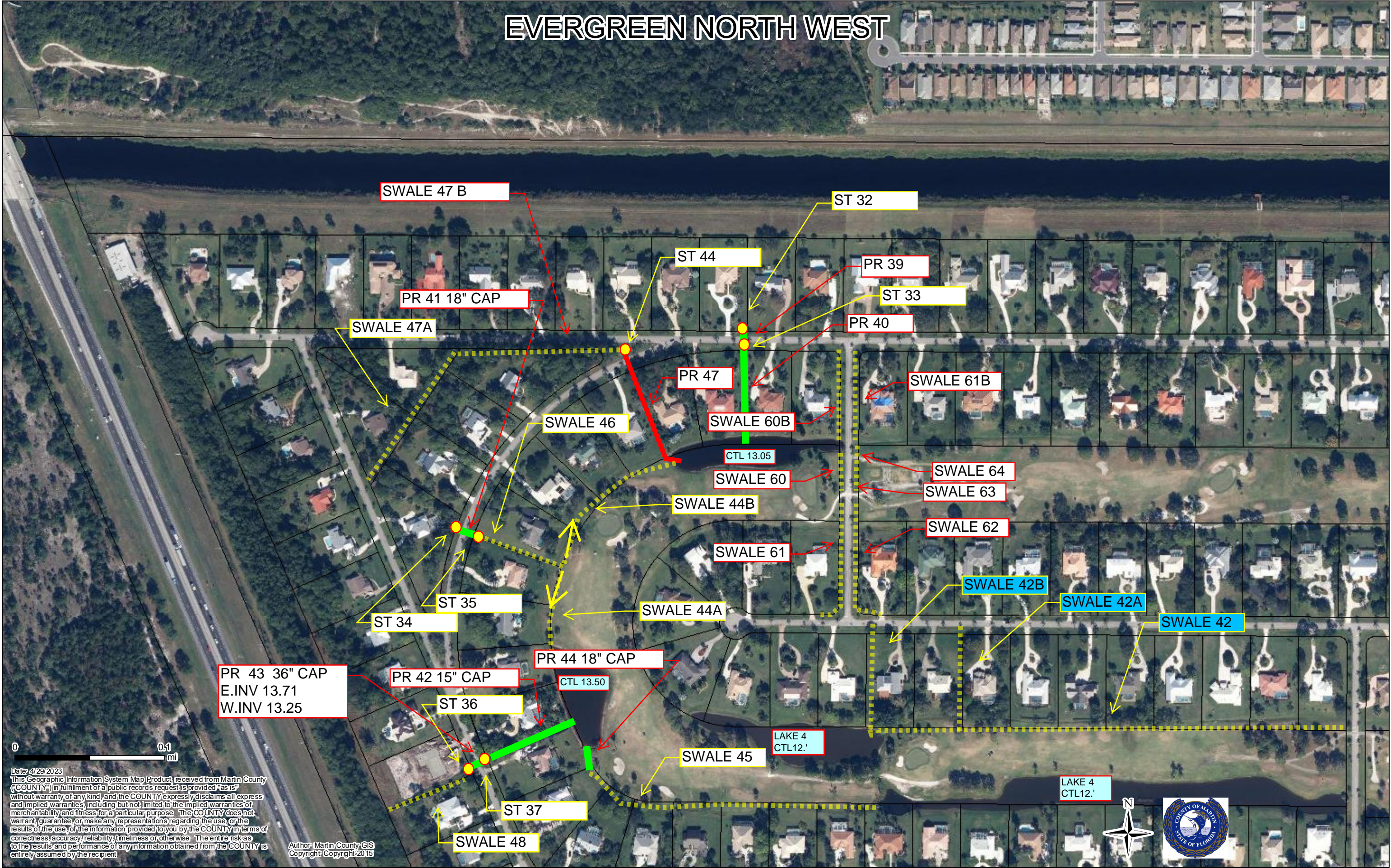


Date: 4/29/2023
This Geographic Information System Map Product, received from Martin County ("COUNTY") in fulfillment of a public records request, is provided "as is" without warranty of any kind, and the COUNTY expressly disclaims all express and implied warranties, including but not limited to the implied warranties of merchantability and fitness for a particular purpose. The COUNTY does not warrant, guarantee, or make any representations regarding the use or the results of the use of the information provided to you by the COUNTY in terms of correctness, accuracy, reliability, timeliness or otherwise. The entire risk as to the results and performance of any information obtained from the COUNTY is entirely assumed by the recipient.

Author: Martin County GIS
Copyright: Copyright-2015



EVERGREEN NORTH WEST

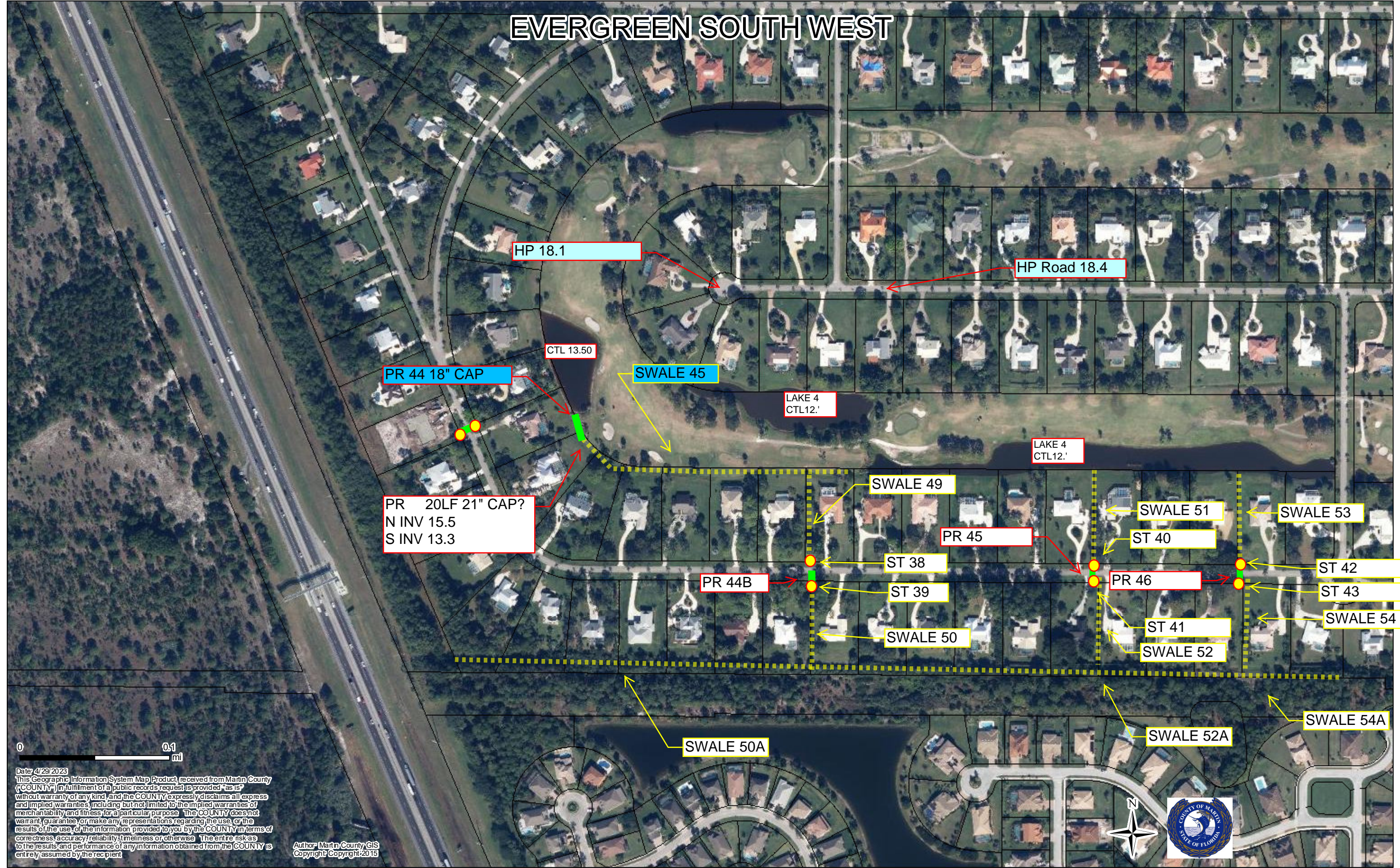


Date: 4/29/2023
 This Geographic Information System (GIS) Map Product received from Martin County ("COUNTY") in fulfillment of a public records request is provided "as is" without warranty of any kind, and the COUNTY expressly disclaims all express and implied warranties, including but not limited to the implied warranties of merchantability and fitness for a particular purpose. The COUNTY does not warrant, guarantee or make any representations regarding the use or the results of the use of the information provided to you by the COUNTY in terms of correctness, accuracy, reliability, timeliness or otherwise. The entire risk as to the results and performance of any information obtained from the COUNTY is entirely assumed by the recipient.

Author: Martin County GIS
 Copyright: Copyright: 2015



EVERGREEN SOUTH WEST



0 0.1 mi

Date: 4/29/2023
 This Geographic Information System Map Product, received from Martin County (COUNTY) in fulfillment of a public records request, is provided "as is" without warranty of any kind, and the COUNTY expressly disclaims all express and implied warranties, including but not limited to the implied warranties of merchantability and fitness for a particular purpose. The COUNTY does not warrant, guarantee or make any representations regarding the use or the results of the use of the information provided to you by the COUNTY in terms of correctness, accuracy, reliability, timeliness or otherwise. The entire risk as to the results and performance of any information obtained from the COUNTY is entirely assumed by the recipient.

Author: Martin County GIS
 Copyright: Copyright: 2015

