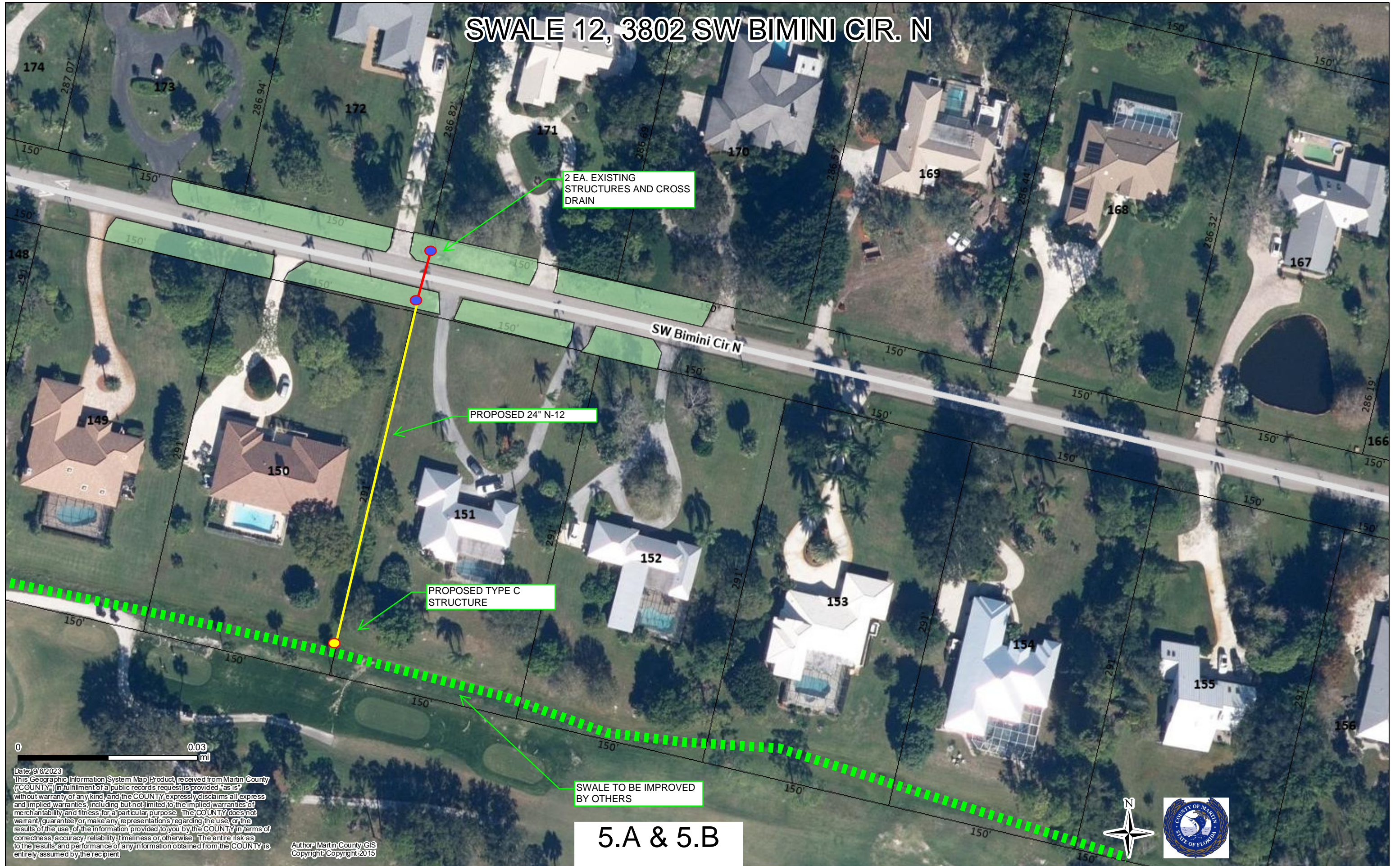


SWALE 12, 3802 SW BIMINI CIR. N



2 EA. EXISTING STRUCTURES AND CROSS DRAIN

PROPOSED 24" N-12

PROPOSED TYPE C STRUCTURE

SWALE TO BE IMPROVED BY OTHERS

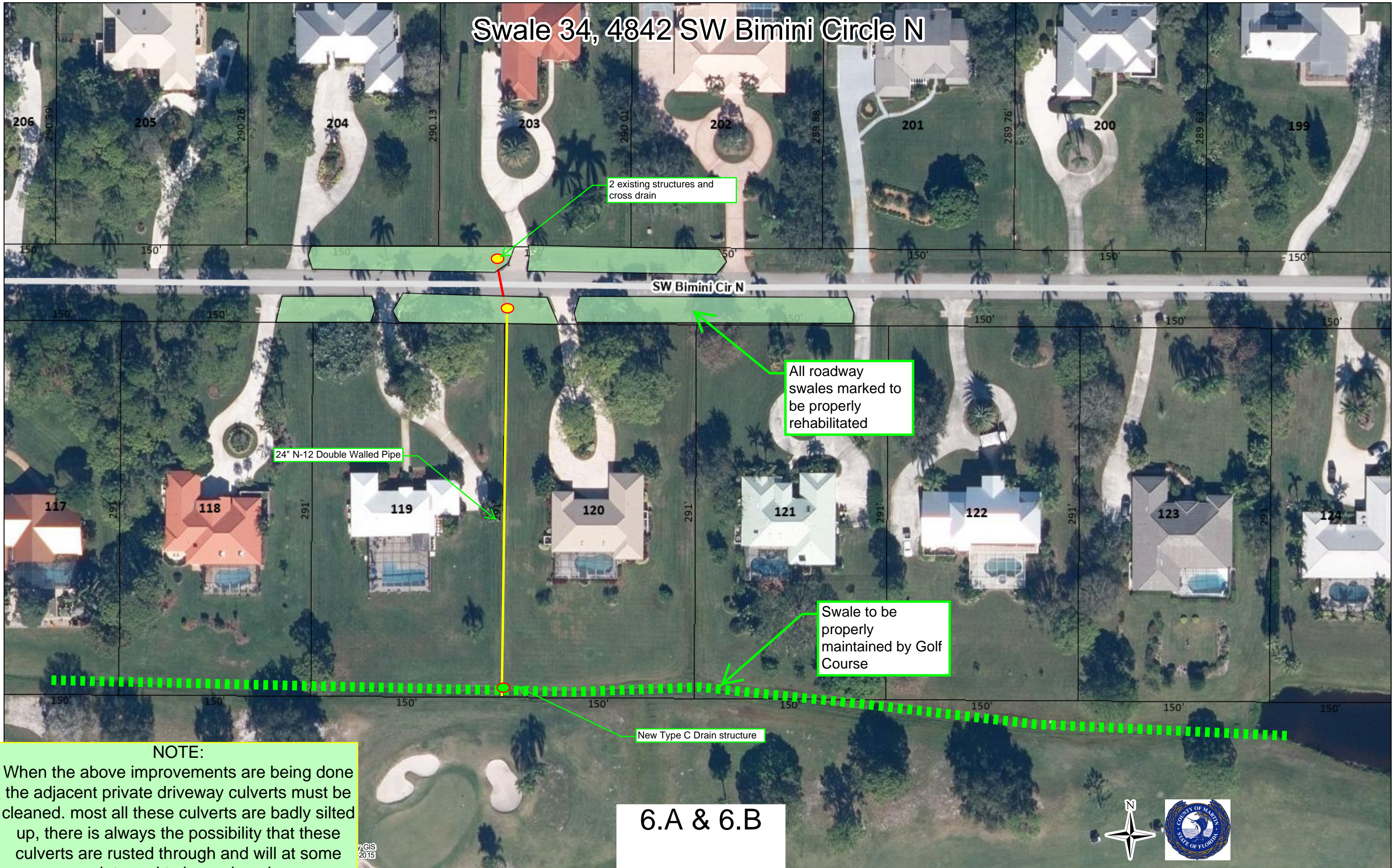
5.A & 5.B

Date: 9/6/2023
This Geographic Information System Map Product, received from Martin County (COUNTY) in fulfillment of a public records request is provided "as is" without warranty of any kind, and the COUNTY expressly disclaims all express and implied warranties, including but not limited to the implied warranties of merchantability and fitness for a particular purpose. The COUNTY does not warrant, guarantee or make any representations regarding the use or the results of the use of the information provided to you by the COUNTY in terms of correctness, accuracy, reliability, timeliness or otherwise. The entire risk as to the results and performance of any information obtained from the COUNTY is entirely assumed by the recipient.

Author: Martin County GIS
Copyright: Copyright: 2015



Swale 34, 4842 SW Bimini Circle N



NOTE:
When the above improvements are being done the adjacent private driveway culverts must be cleaned. most all these culverts are badly silted up, there is always the possibility that these culverts are rusted through and will at some point need to be replaced.

6.A & 6.B

Carib Ct Headwalls

CONSTRUCT 4 EACH NATURAL ROCK SPILL WAYS.

FURNISH AND CONSTRUCT 2 EACH FDOT CONCRETE ENDWALL INDEX 250

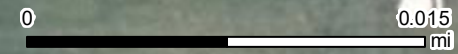
GRADE COMPACT AND SOD, FOCUS ALL GRADING TO ALLOW RUNOFF INTO SILL WAYS

GOLF COUSE SWALE TO BE GRADED AND SODDED TO ALLOW LAKE TO DRAIN AT EL. 13.05

GRADE AND SOD TO ALLOW LAKE TO DRAIN AT EL 13.05'

THREE CART PATH CULVERTS TO BE CHECKED AND VERIFIED. DIAMETER AND INVERTS MAY NEED TO BE CHANGED BY GOLF COURSE. FLOW LINES MUST DRAIN BERMUDA VIA CARIB

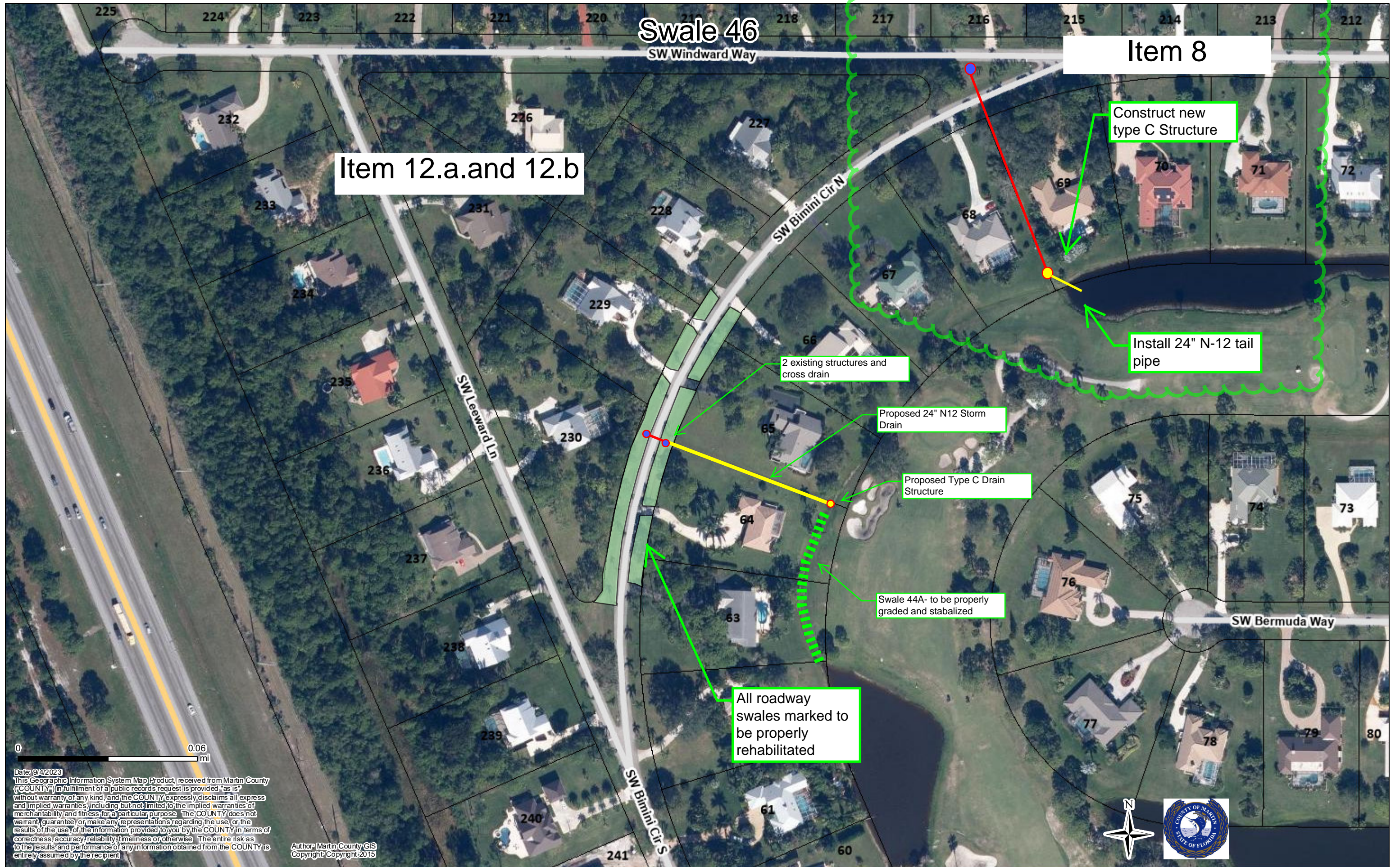
7



Date: 8/30/2023
 This Geographic Information System (GIS) Map Product, received from Martin County ("COUNTY") in fulfillment of a public records request is provided "as is" without warranty of any kind, and the COUNTY expressly disclaims all express and implied warranties, including but not limited to the implied warranties of merchantability and fitness for a particular purpose. The COUNTY does not warrant, guarantee or make any representations regarding the use, or the results of the use, of the information provided to you by the COUNTY in terms of correctness, accuracy, reliability, timeliness or otherwise. The entire risk as to the results and performance of any information obtained from the COUNTY is entirely assumed by the recipient.

Author: Martin County GIS
 Copyright: Copyright: 2015





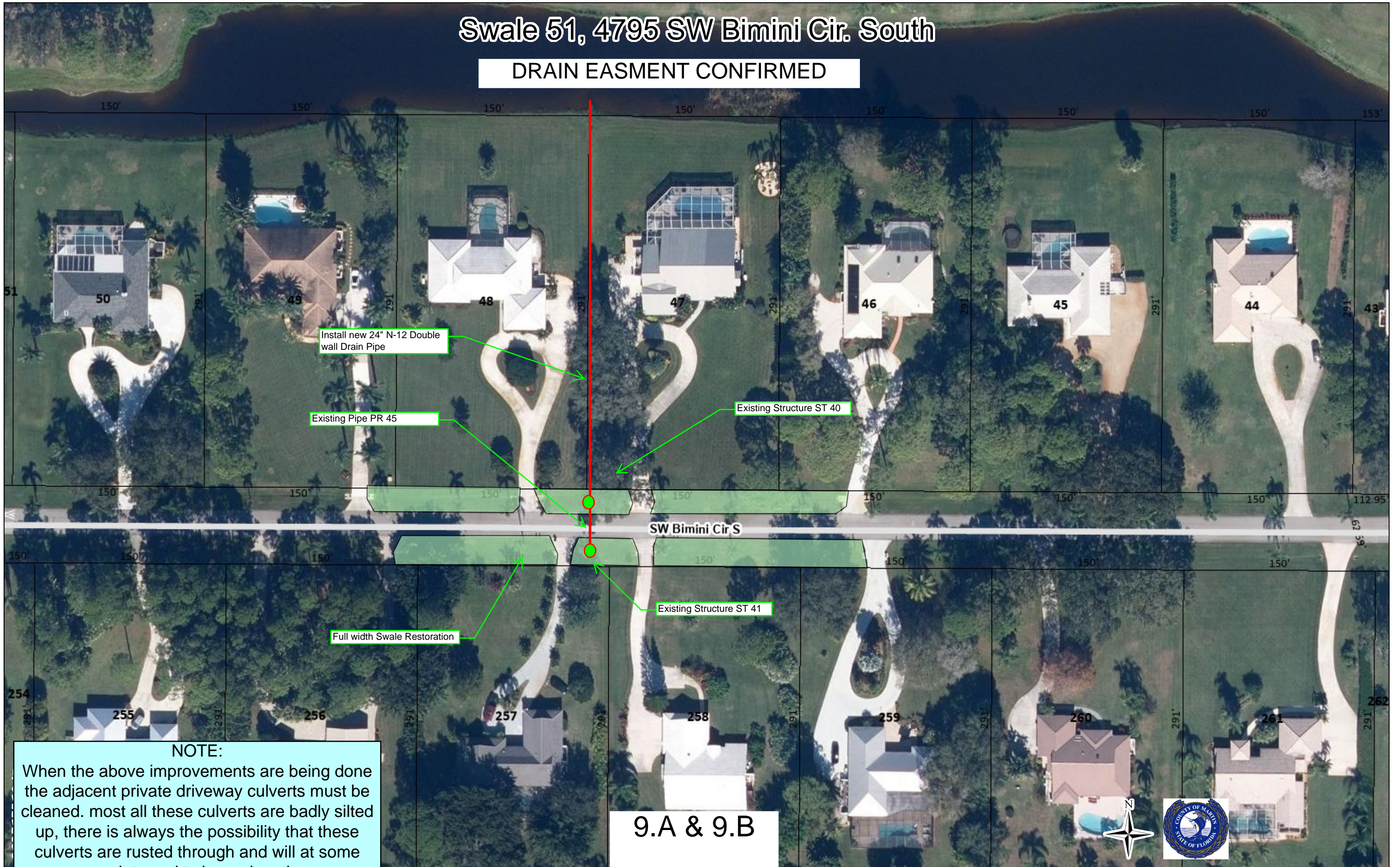
Date: 9/4/2023
 This Geographic Information System Map Product, received from Martin County (COUNTY) in fulfillment of a public records request is provided "as is" without warranty of any kind, and the COUNTY expressly disclaims all express and implied warranties, including but not limited to the implied warranties of merchantability and fitness for a particular purpose. The COUNTY does not warrant, guarantee, or make any representations regarding the use, or the results of the use, of the information provided to you by the COUNTY in terms of correctness, accuracy, reliability, timeliness or otherwise. The entire risk as to the results and performance of any information obtained from the COUNTY is entirely assumed by the recipient.

Author: Martin County GIS
 Copyright: Copyright: 2015



Swale 51, 4795 SW Bimini Cir. South

DRAIN EASEMENT CONFIRMED



NOTE:
When the above improvements are being done the adjacent private driveway culverts must be cleaned. most all these culverts are badly silted up, there is always the possibility that these culverts are rusted through and will at some point need to be replaced.

9.A & 9.B

