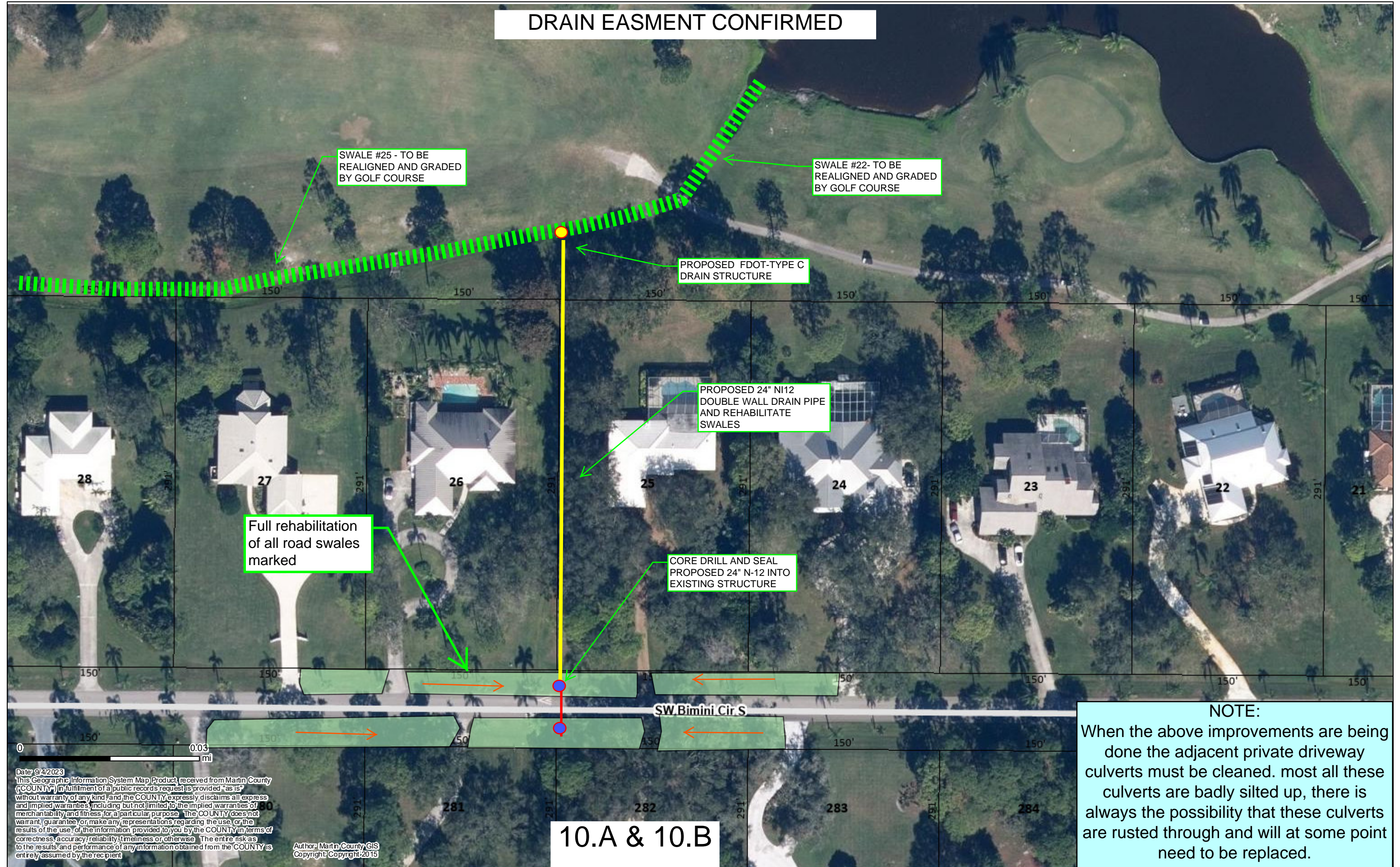


SWALE 24, 4005 SW BIMINI TR. SOUTH

DRAIN EASEMENT CONFIRMED



PR 20B 4342 SW Bimini North



PROPOSED 24" N-12 DOUBLE WALL STORM PIPE, REGRADE AND IMPROVE GRADES BETWEEN HOMES

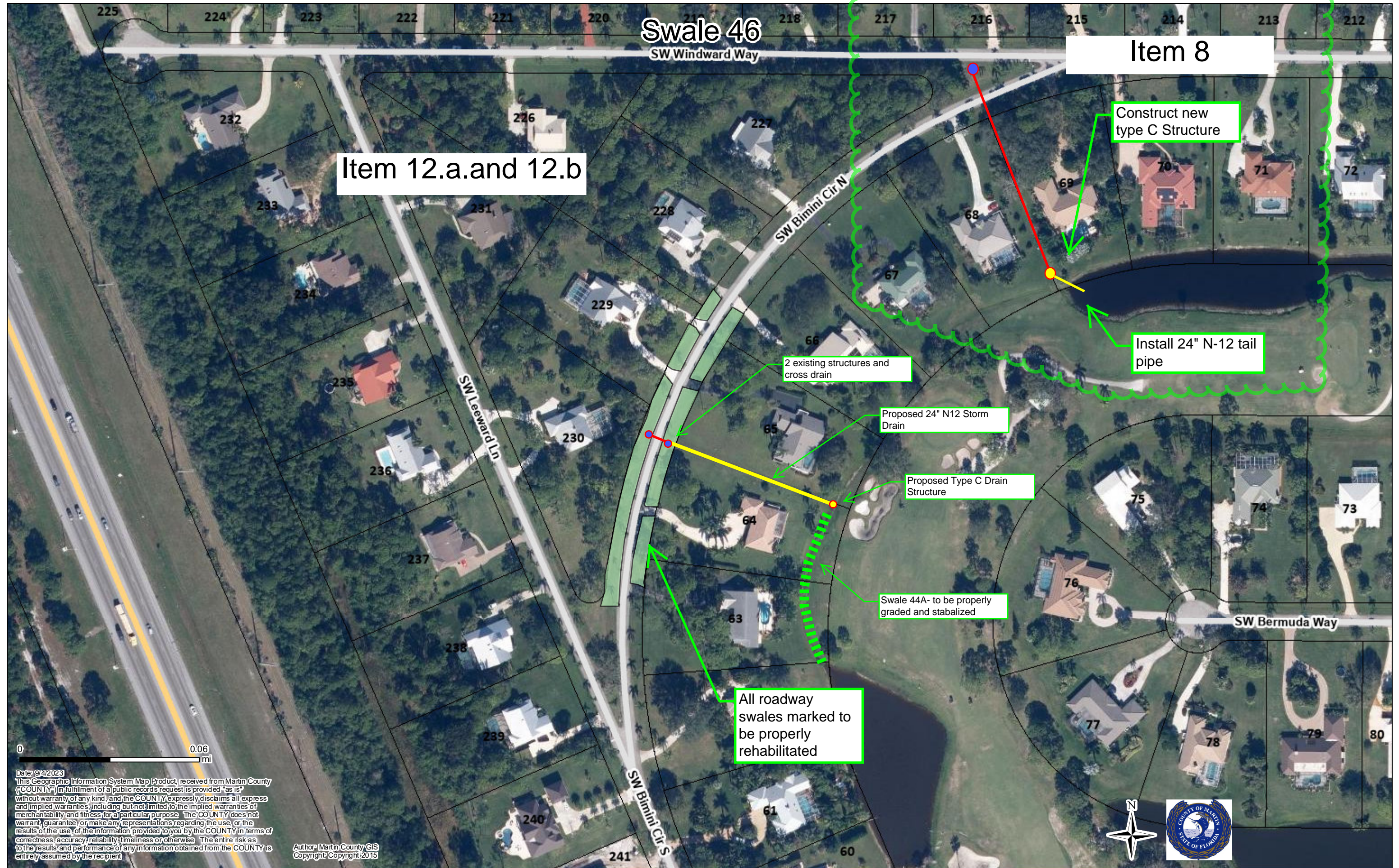
PROPOSED FULL WIDTH SWALE REHABILITATION

CORE EXISTING STRUCTURE SEAL IN 24" PROPOSED N-12

NOTE:
When the above improvements are being done the adjacent private driveway culverts must be cleaned. most all these culverts are badly silted up, there is always the possibility that these culverts are rusted through and will at some point need to be replaced.

11.A & 11.B





Date: 9/4/2023
 This Geographic Information System Map Product, received from Martin County (COUNTY) in fulfillment of a public records request is provided "as is" without warranty of any kind, and the COUNTY expressly disclaims all express and implied warranties, including but not limited to the implied warranties of merchantability and fitness for a particular purpose. The COUNTY does not warrant, guarantee, or make any representations regarding the use, or the results of the use, of the information provided to you by the COUNTY in terms of correctness, accuracy, reliability, timeliness or otherwise. The entire risk as to the results and performance of any information obtained from the COUNTY is entirely assumed by the recipient.

Author: Martin County GIS
 Copyright: Copyright: 2015



PR 16A, 1401 SW Bimini DRAIN EASMENT CONFIRMED



EXISTING CROSS DRAIN

2 EA. EXISTING DRAIN STRUCTURES

PROPOSED 24" N-12 DRAIN PIPE

Rehabilitate Road swales in this area

PROPOSED TYPE C STRUCTURE

SWALE 14, MAINTAINED BY GOLF COUSE, NEEDS TO BE DUG OUT AND STABILIZED

13.A & 13.B

Legend

Roads

- EXP
- MAA; MAC; MIA; PKY
- MIC
- RES; RMP
- RailRoads
- Lot Lines
- Parcel Dimensions
- Lots
- Blocks
- Parcel Polygons
- Subdivision
- Red: Red
- Green: Green
- Blue: Blue

Date: 9/5/2023
 This Geographic Information System Map Product, received from Martin County (COUNTY) in fulfillment of a public records request is provided "as is" without warranty of any kind, and the COUNTY expressly disclaims all express and implied warranties, including but not limited to the implied warranties of merchantability and fitness for a particular purpose. The COUNTY does not warrant, guarantee or make any representations regarding the use or the results of the use of the information provided to you by the COUNTY in terms of correctness, accuracy, reliability, timeliness or otherwise. The entire risk as to the results and performance of any information obtained from the COUNTY is entirely assumed by the recipient.

Author: Martin County GIS
 Copyright: Copyright: 2015

SWALE 9, LOT 16



Full rehabilitation of all road swales marked

Proper sized pipes and swales, required to drain this segment, to be provided by Golf Course

PROPOSED 24" N12 DOUBLE WALL DRAIN PIPE AND REHABILITATE SWALES

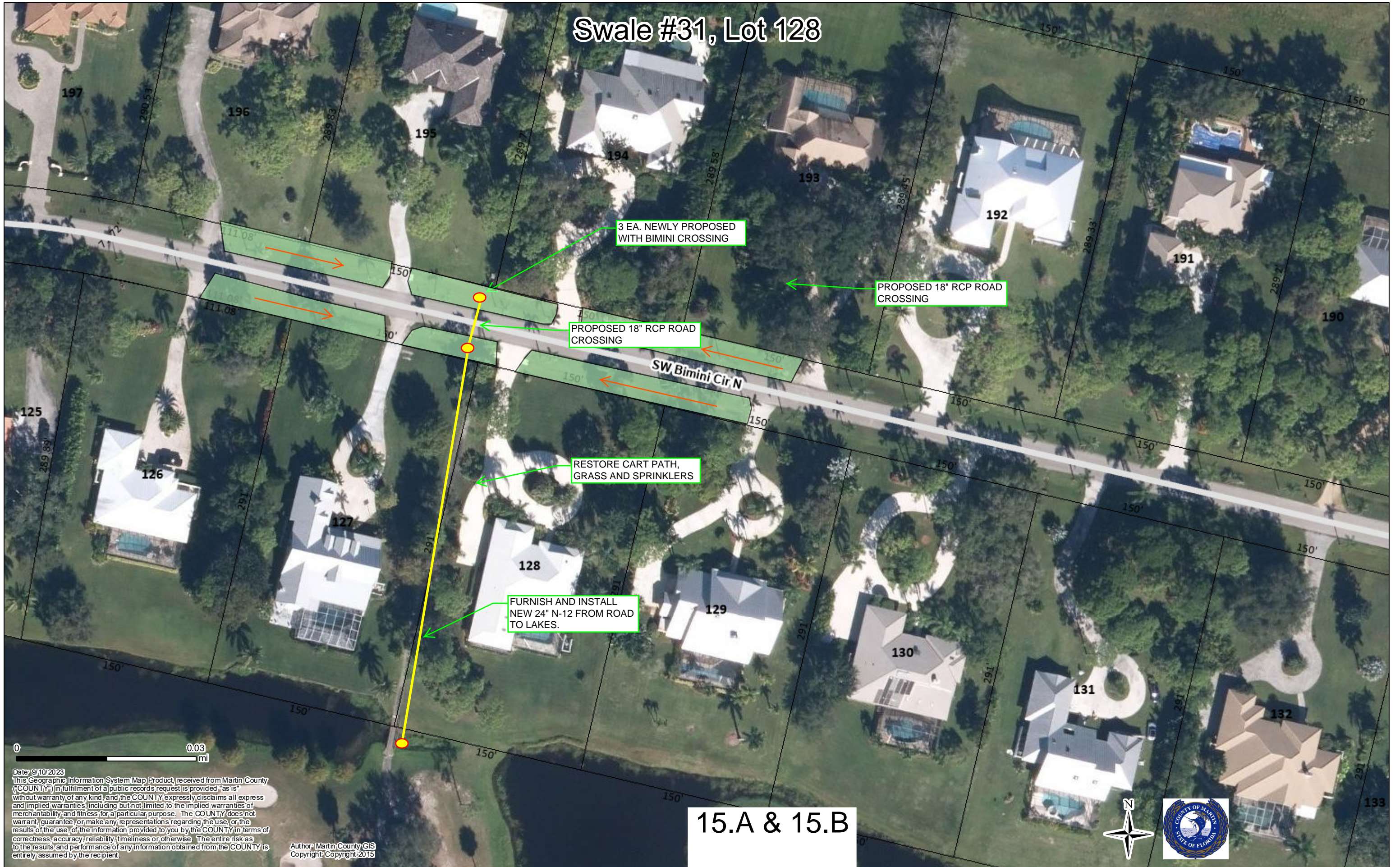
CORE DRILL AND SEAL PROPOSED 24" N-12 INTO EXISTING STRUCTURE

NOTE:
When the above improvements are being done the adjacent private driveway culverts must be cleaned. most all these culverts are badly silted up, there is always the possibility that these culverts are rusted through and will at some point need to be replaced.

14.A & 14.B

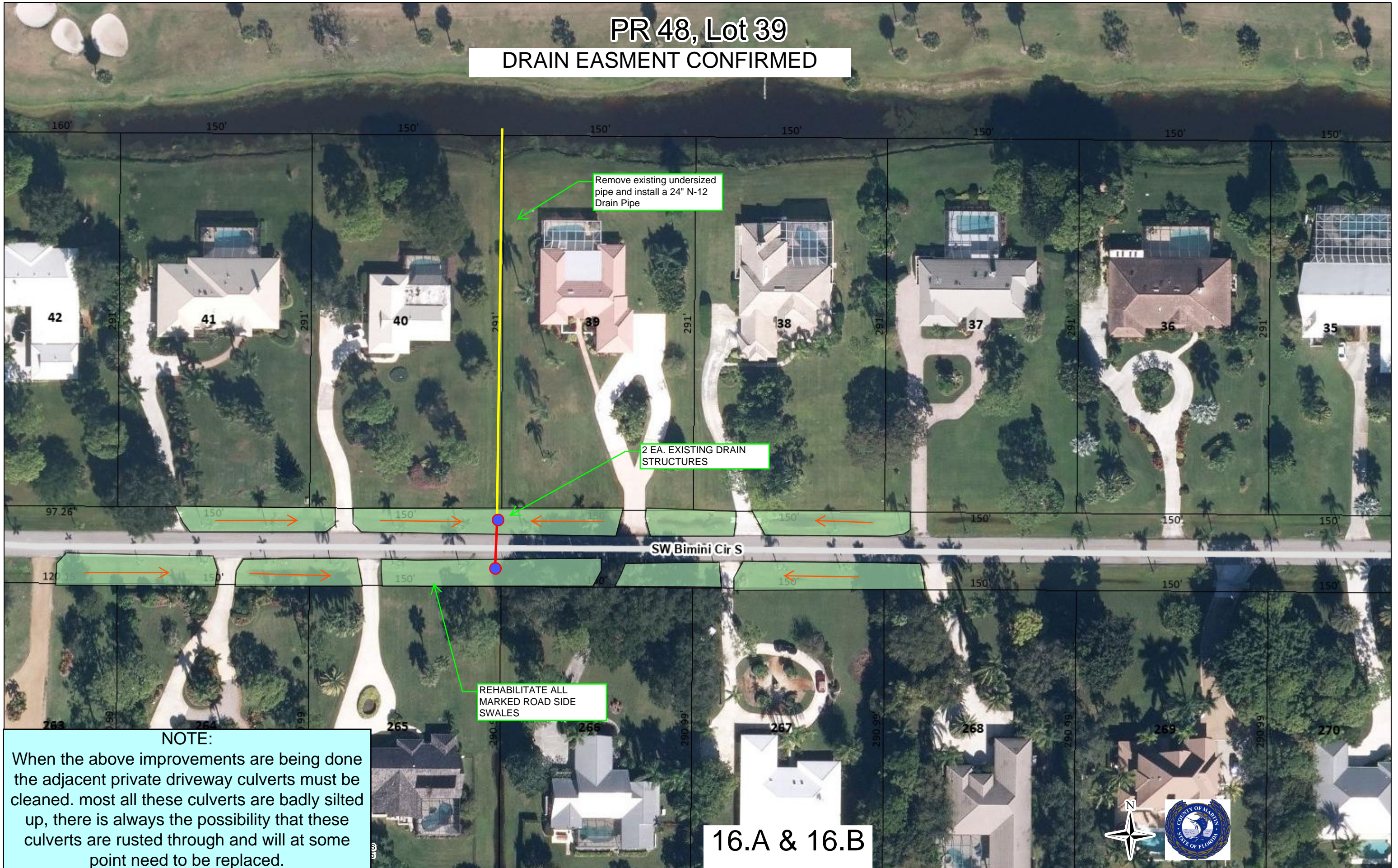


Swale #31, Lot 128



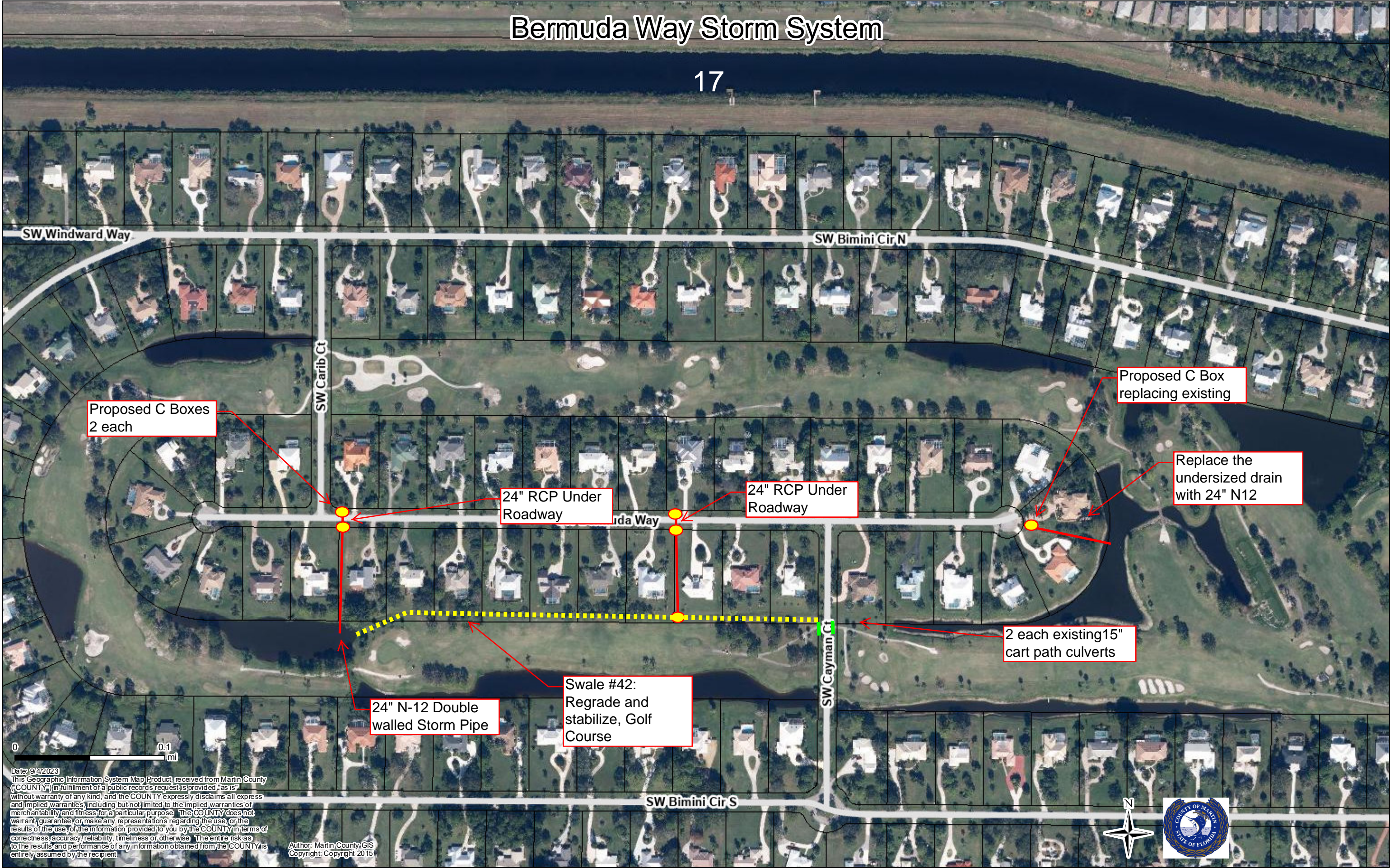
PR 48, Lot 39

DRAIN EASMENT CONFIRMED



Bermuda Way Storm System

17



Date: 9/4/2023
This Geographic Information System Map Product, received from Martin County ("COUNTY") in fulfillment of a public records request is provided "as is" without warranty of any kind, and the COUNTY expressly disclaims all express and implied warranties, including but not limited to the implied warranties of merchantability and fitness for a particular purpose. The COUNTY does not warrant, guarantee or make any representations regarding the use or the results of the use of the information provided to you by the COUNTY in terms of correctness, accuracy, reliability, timeliness or otherwise. The entire risk as to the results and performance of any information obtained from the COUNTY is entirely assumed by the recipient.

Author: Martin County GIS
Copyright: Copyright 2015

