

# Evergreen Club POA

Drainage Improvements - Locations

Legend



7) Carib Court Endwalls and spillways

8) PR 47: Remove elbow and install a structure

6) Swale 34 A&B

11) PR 20B, A&B 4342 SW Bimini N

15) Add New Cross Drain and back drain to lakes.

5) Swale 12, A&B

12) A&B Swale 46

17) Bermuda Way Outfalls

13) 16A, A&B 4102 SW Bimini

14) A&B Swale 9,

10) A&B Swale 24, 4005 SW Bimini S.

2) PR 43 Cross drain replacement and structures rehab

16) A&B

4) Swale 26, 4145 SW Bimini S.

9) A&B Swale 51 4795 SW Bimini

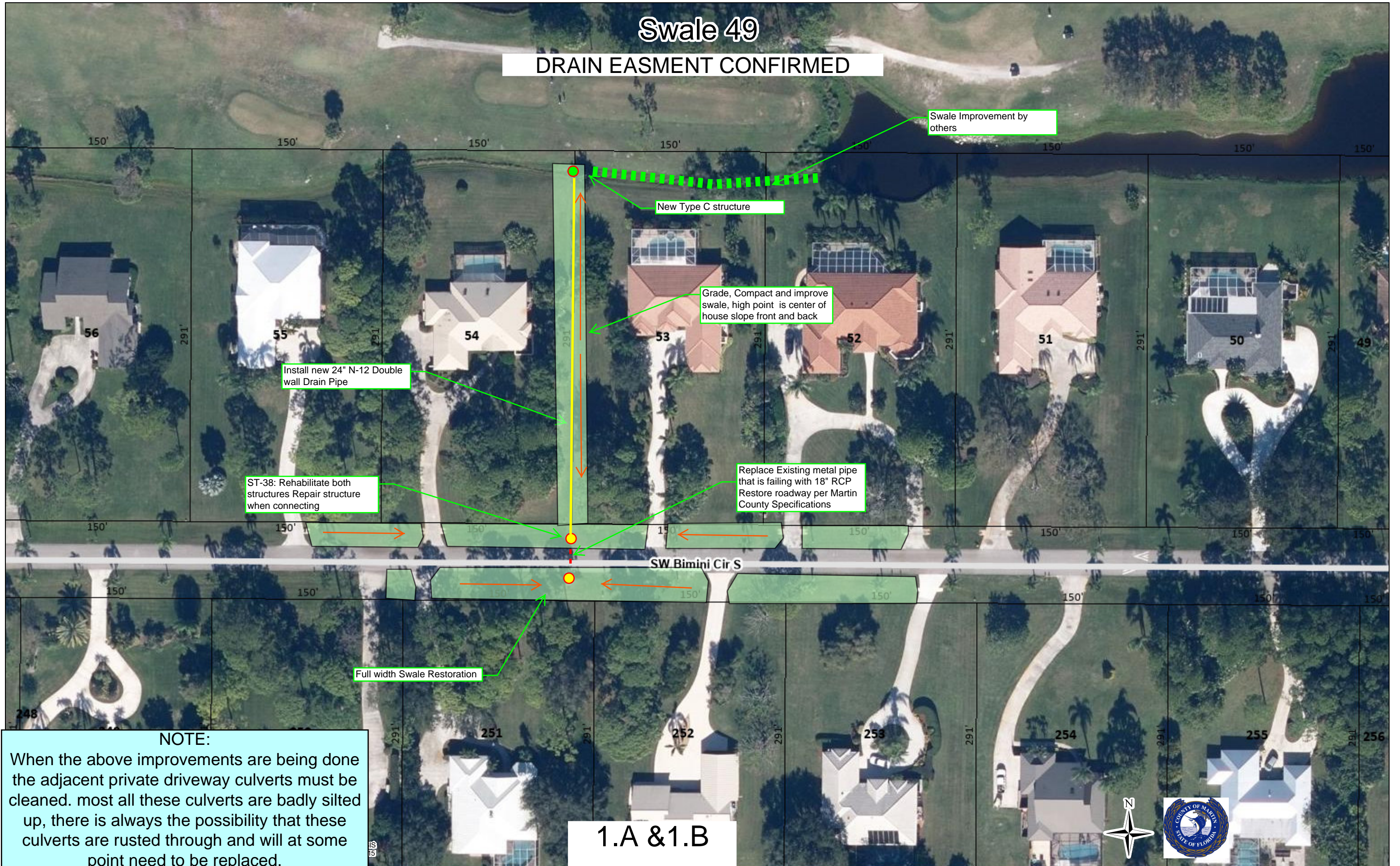
1) PR 44, Swale 49 and Road Crossing

3) A&B PR 25 B and road swales



# Swale 49

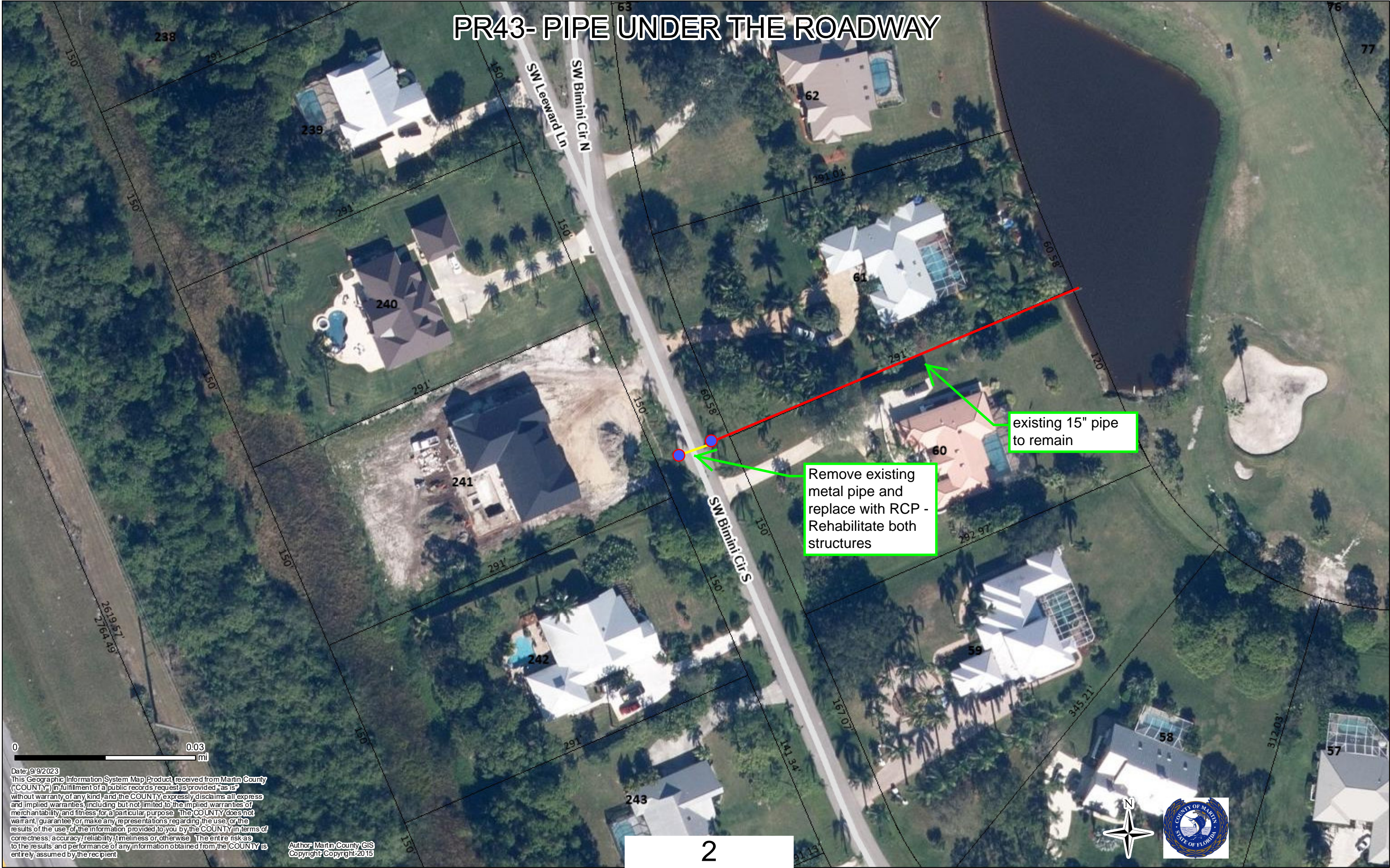
DRAIN EASMENT CONFIRMED



**NOTE:**  
When the above improvements are being done the adjacent private driveway culverts must be cleaned. most all these culverts are badly silted up, there is always the possibility that these culverts are rusted through and will at some point need to be replaced.

1.A & 1.B

# PR43- PIPE UNDER THE ROADWAY



Date: 9/9/2023  
This Geographic Information System Map Product received from Martin County ("COUNTY") in fulfillment of a public records request is provided "as is" without warranty of any kind, and the COUNTY expressly disclaims all express and implied warranties, including but not limited to the implied warranties of merchantability and fitness for a particular purpose. The COUNTY does not warrant, guarantee or make any representations regarding the use, or the results of the use, of the information provided to you by the COUNTY in terms of correctness, accuracy, reliability, timeliness or otherwise. The entire risk as to the results and performance of any information obtained from the COUNTY is entirely assumed by the recipient.

Author: Martin County GIS  
Copyright: Copyright: 2015

# Evergreen

4396 SW Bimini Cir S

Legend

Properly grade, modify Irrigation and sod with floratam sod.

Grade and sod shaded areas per detailed grading plan.

Establish flow line from break point (high point) further up the road, to the discharge structures

Grade and R.O.W. sod shaded areas (R.O.W.) per detailed grading plan.

open end discharge into pond

Remove existing undersized pipe replace with 24" N-12 Double Wall storm pipe

Core drill and seal into existing box the proposed 24" pipe

Establish flow line from break point (high point) further up the road, to the discharge structures

2- ea Existing drain structures designed to catch swale water and drain to the back pond. Due to lack of / or improper swale maintenance and blocked driveway culverts. Stormwater cannot reach these two structures.

## NOTE:

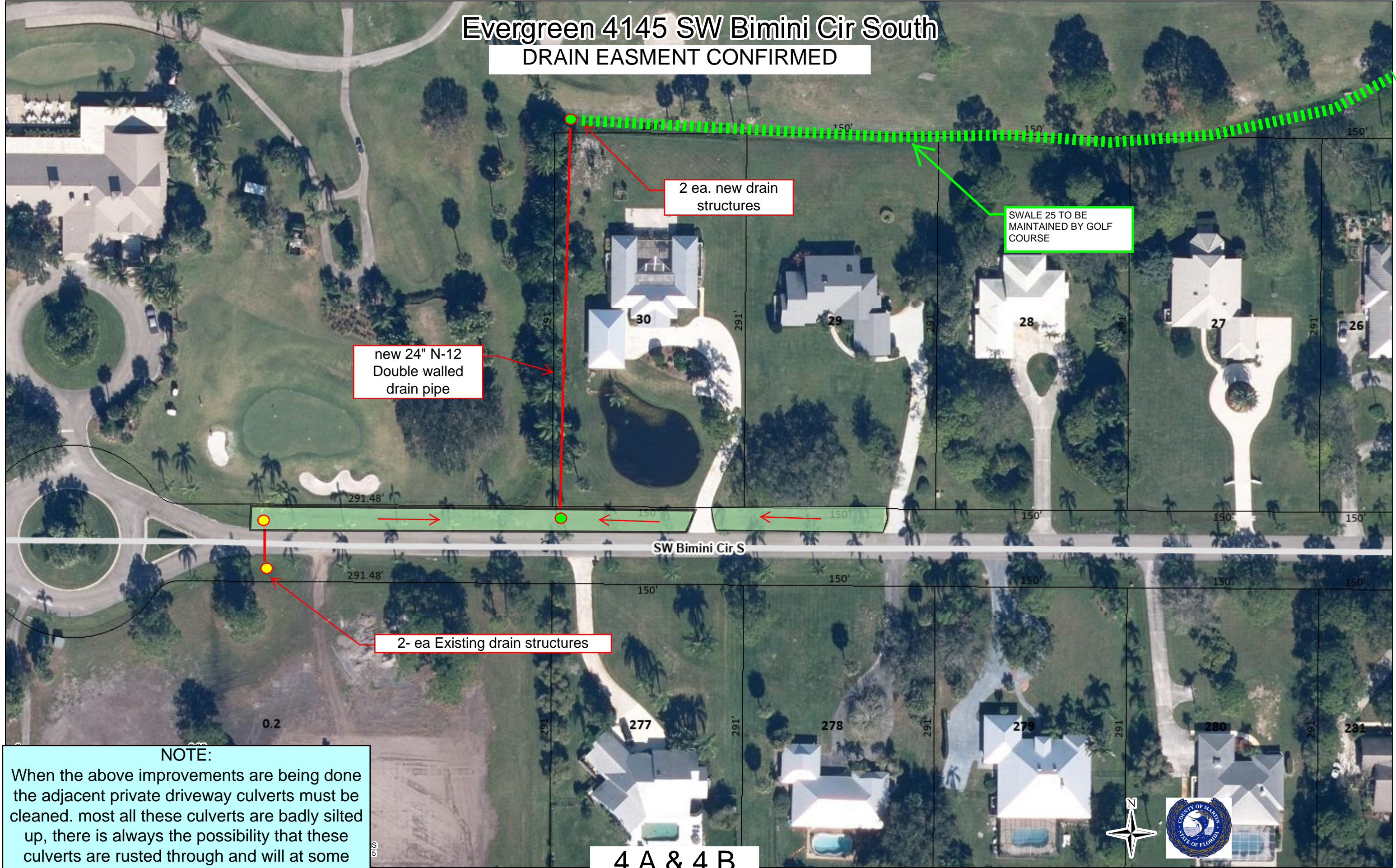
When the above improvements are being done the adjacent private driveway culverts must be cleaned. most all these culverts are badly silted up, there is always the possibility that these culverts are rusted through and will at some point need to be replaced.

### 3.A AND 3.B

100 ft



# Evergreen 4145 SW Bimini Cir South DRAIN EASMENT CONFIRMED



**NOTE:**  
When the above improvements are being done the adjacent private driveway culverts must be cleaned. most all these culverts are badly silted up, there is always the possibility that these culverts are rusted through and will at some point need to be replaced.

4.A & 4.B

